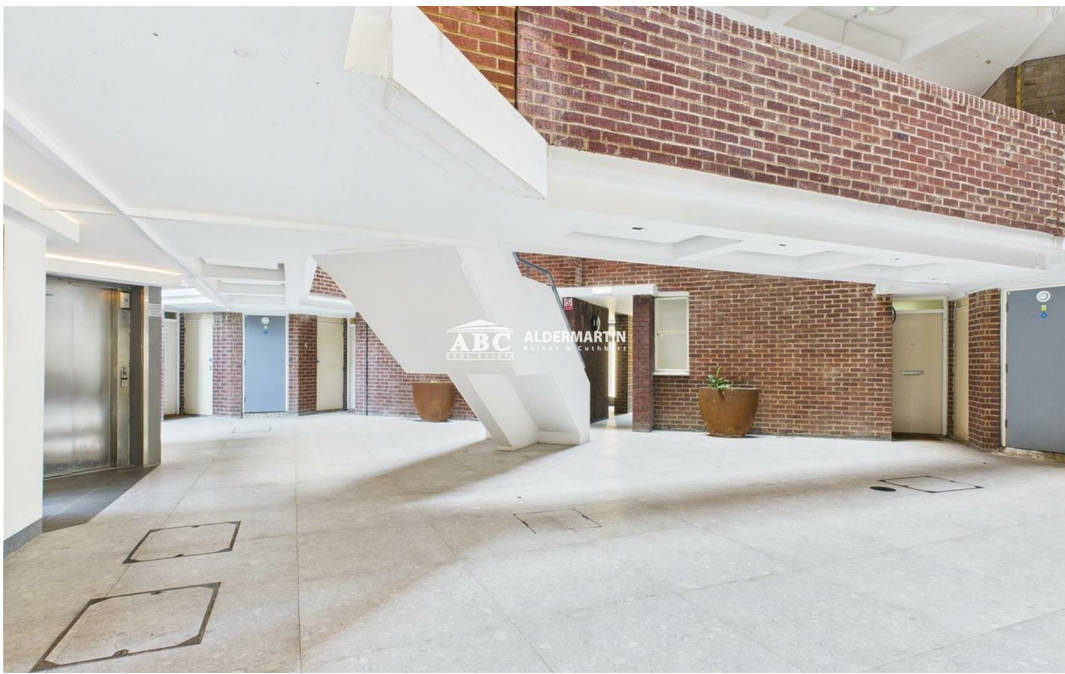
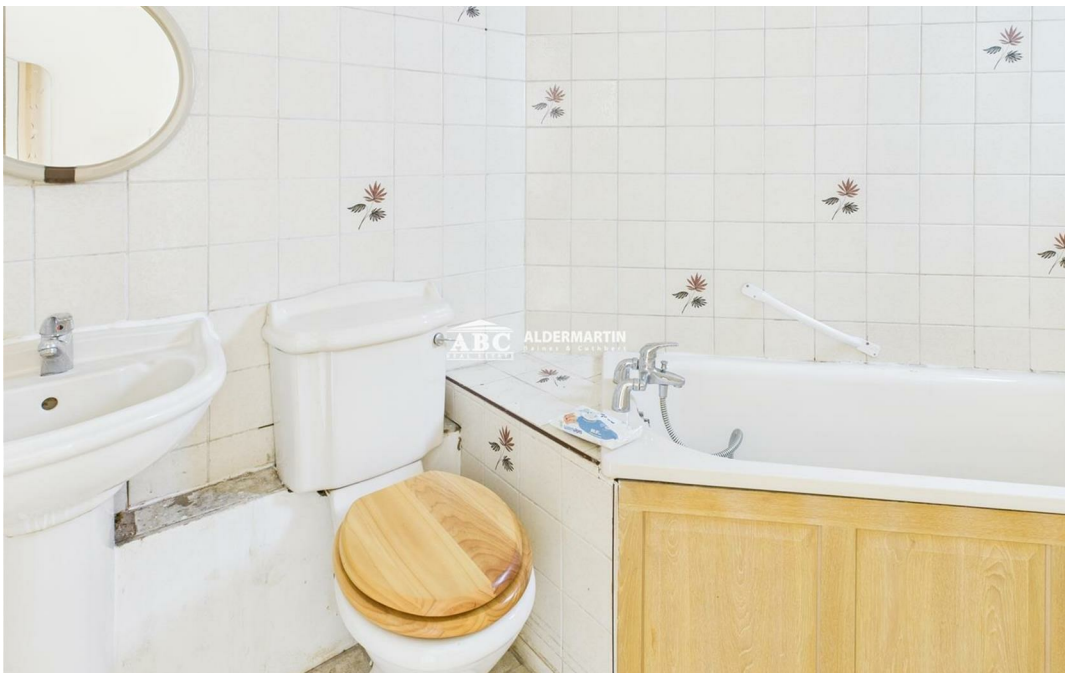


Nether Street, London N3 1QQ

£285,000
Leasehold -
Close of







- 1 BEDROOM
- COMMUNAL GARDENS
- COUNCIL TAX BAND C

- SPACIOUS
- GREAT LOCATION
- 24HR CONCIERGE

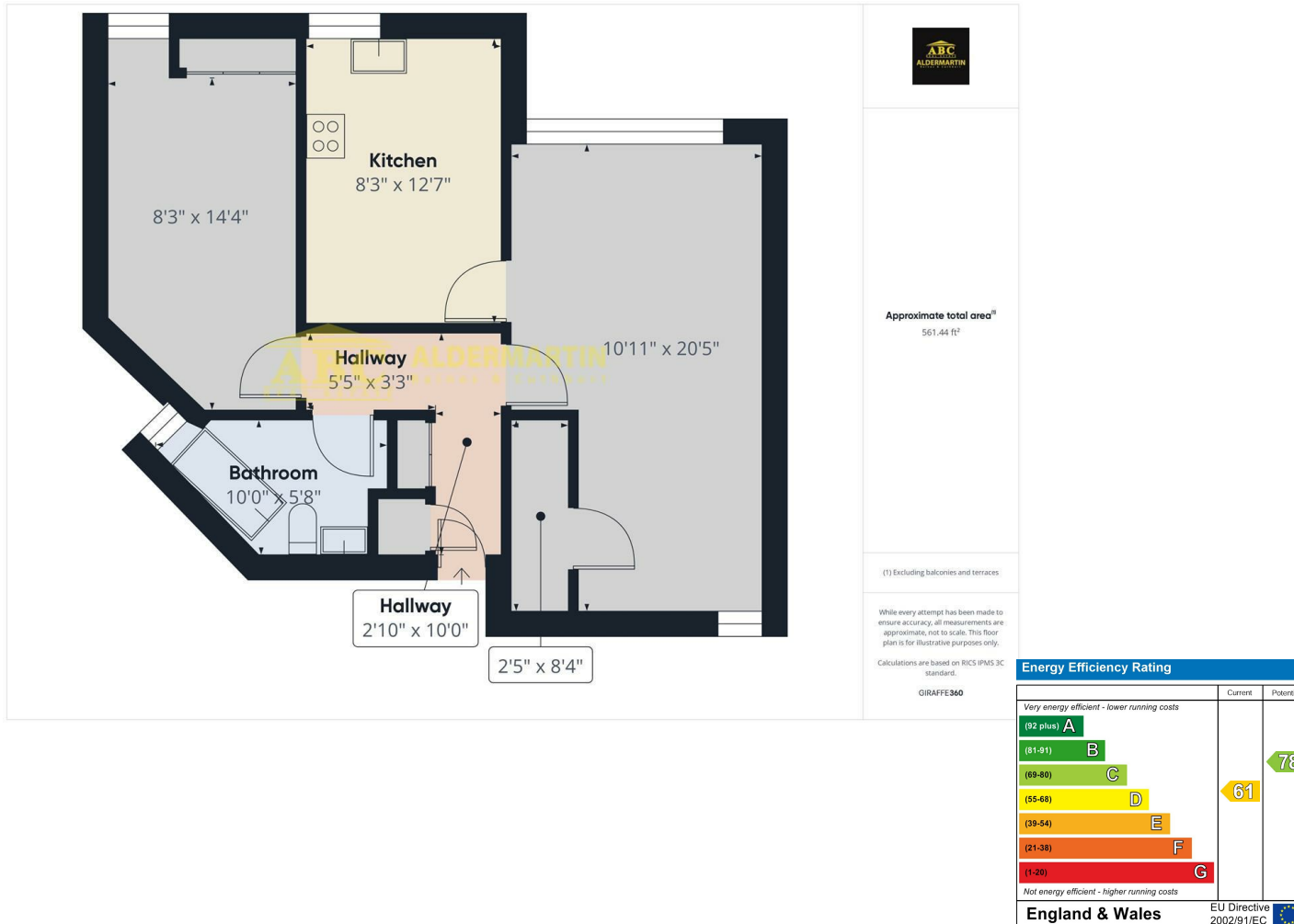
- GATED
- EPC RATING D

A bright and spacious 1 bedroom ground floor apartment situated within the popular Norman Court, N3.

Comprising 1 double bedroom, spacious living room, large separate kitchen, family bathroom and various storage spaces throughout. This property is in need of modernisation, the perfect opportunity for a buyer to put their stamp on the property.

Further benefits include a share of the freehold, 24hr concierge service, gated access, communal gardens and parking.

EPC Rating D
Council Tax Band C



ABC Hendon Sales
020 8203 4567

